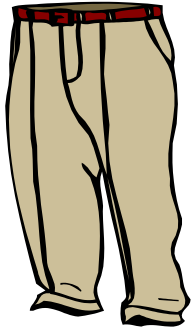


# LA ROPA



pantalón



camiseta



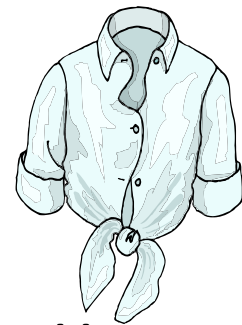
camisa



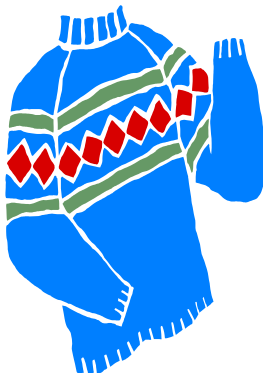
falda



vestido



blusa



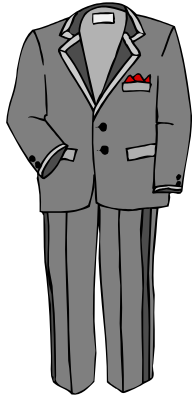
suéter



chaleco



piyama



traje



chaqueta



abrigo

## Los Accesorios



zapato(s)



tenis/zapatilla(s)



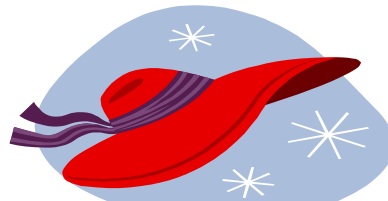
sandalia(s)



bota(s)



cinturón



sombrero



guantes



bufanda



gorra



gafas